



Zowyeh Electronic Co., Ltd

***Your best choice for
Assembly and PCB***



Who Zowyeh is?

Zowyeh Electronic is a professional company on supplying electronics manufacturing services with factories in China. We are able to provide a complete range of reliable and certificated products to satisfy customers' needs and wants.

Zowyeh is serving the global industry with good quality of assembly service and PCBs supplying. Our products mainly serve the industries in Telecommunications, Computers, Industrial, Automotives, Security, Traffic Control, Bluetooth, GPS, and Medical.

Operation headquarter:

No.2 Building, WUZI Industrial Park
Bantian, Longgang District, Shenzhen, 518129 P-R-China

Sales revenue of US\$ 25 million in year 2007.



What Zowyeh do?

Zowyeh mainly supplies products and services to:

- DIP/SMT Assembly and Turnkey Job / Contract Manufacturing
- Single-sided to Multi-Layer PCB (up to 18 layers)



Capability

Printed Circuit Board Assembly

- Through Hole
 - ▶ Automated Pin Through Hole Assembly
 - ▶ Hand soldering
 - ▶ Wave soldering
- Surface Mount Technology (SMT)
 - ▶ QFP
 - ▶ CSP
 - ▶ BGA & uBGA 0201
- Rigid / Flex PCBs
- Lead free soldering process (Entek, Immersion gold, Immersion tin, immersion silver, lead free HAL)
- LED

Print Circuit Board

LAYERS: 1-18

LINES WIDTH/SPACING:
INNER LAYER 3/3 mil
OUTER LAYER 4/4 mil

SMALL HOLE: 0.2mm/ at 1.6mm

MICRO VIA: 0.1 mm (by laser drilling)

COPPER THICKNESS: 1/2~4 oz,

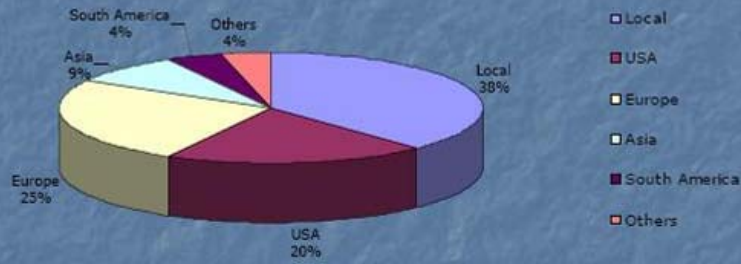
MAX.BOARD SIZE:18"x24"/458x610 mm

BOARD THICKNESS: Thin Board-
2Layers 0.010"(0.25mm)
4Layers 0.020"(0.50mm)
6Layers 0.024"(0.60mm)

BLIND/BURIED VIAS PROCESS

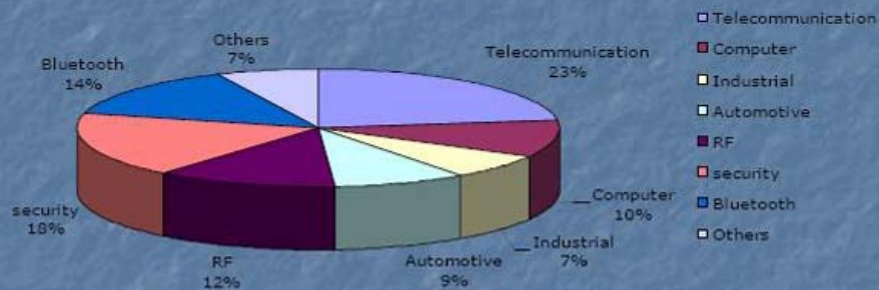
Major Market

Local	USA	Europe	Asia	South America	Others
38%	20%	25%	9%	4%	4%



Product's Application Analysis

Telecommunication	Computer	Industrial	Automotive	RF	security	Bluetooth	Others
23%	10%	7%	9%	12%	18%	14%	7%



Supply Chain Management (PCBA)

- Zowych** has systematic management and evaluation to the suppliers. The customers' ability to forecast their requirements, the technology and availability of specified components, and the need for flexibility will be evaluated to develop a joint strategy for supply management specific to their business needs.
 - Global sourcing;
 - Reviewing products' data;
 - Consolidating shipments;
 - Evaluation of total competitive costs;
 - Calculating & analyzing of MRP;
 - Feedback of the current assemblies market;
 - Evaluating components for availability & second sourcing;
 - Stocks management;
 - Evaluation for suppliers' performance;
- Zowych** coordinates the material support functions through its efficient execution, global procurement database, and strategic supplier relationships to offer in-depth material analysis, flexible supply chain strategies, efficient material cost and personal service

QC Procedure (PCBA)



Facility (Assembly)

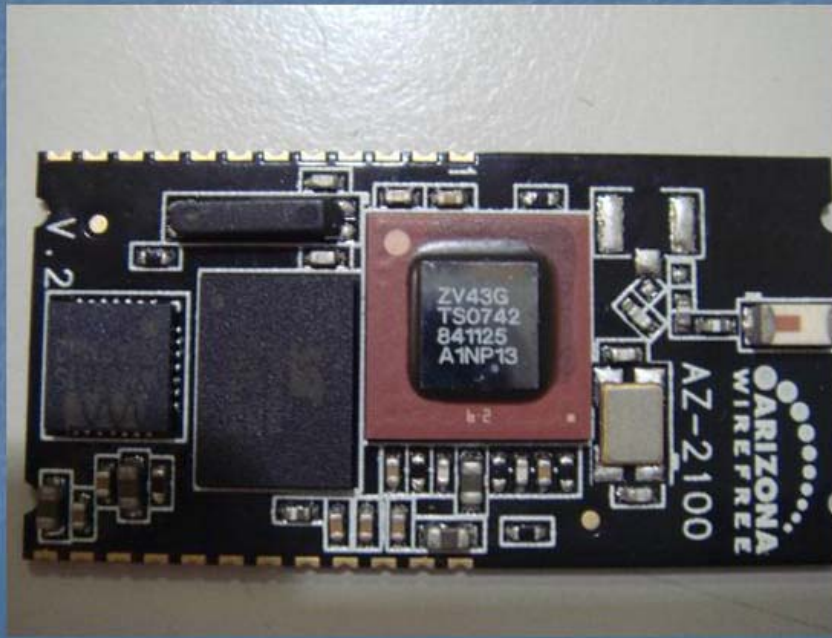
- Established Date : Nov, 2001
- A professional SMT manufacture of PCBAs. Currently, there are altogether 4 SMT Lines, 5 TU/FT Lines in factory.
- Constructed Area : 8345 Square meter
- Major Products : Digital camera, Industrial, Telecommunications, Computers, Automotives, Security, Traffic Control and Medical
- Quality Policy:
 - 1 · Deliver in time: 90%
 - 2 · Quality target : 95%.
 - 3 · Customer's satisfaction: 95%

Fulfillment

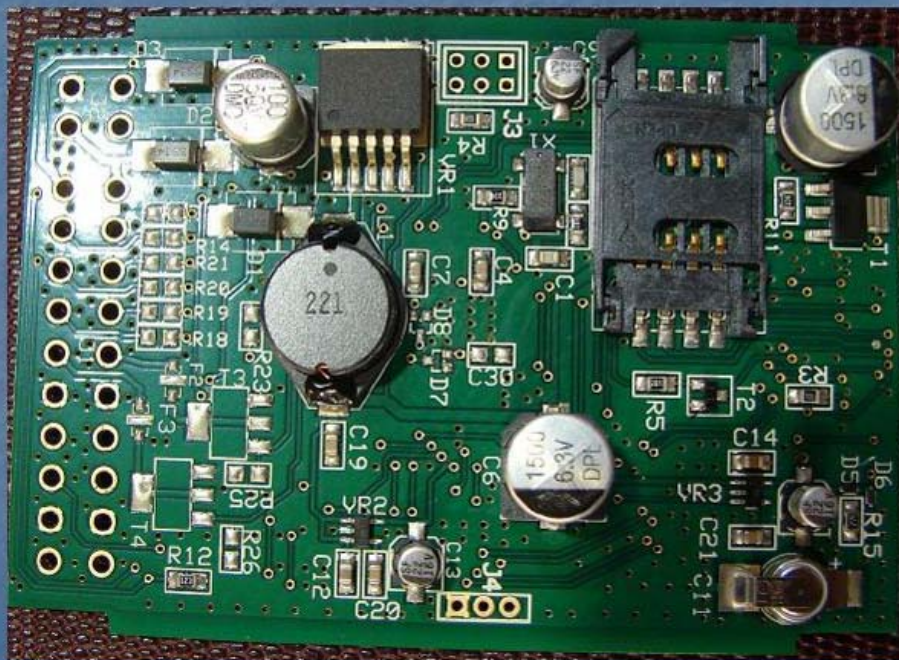
Zowych's standard systems not only meet your expectations on deliveries, but also follow the export/import regulations of Customs, especially for specified trade agreements and special requirements.

More than 10 years of experience in PCB assembly will assure you to source high quality products at the most competitive price.

Product: Bluetooth



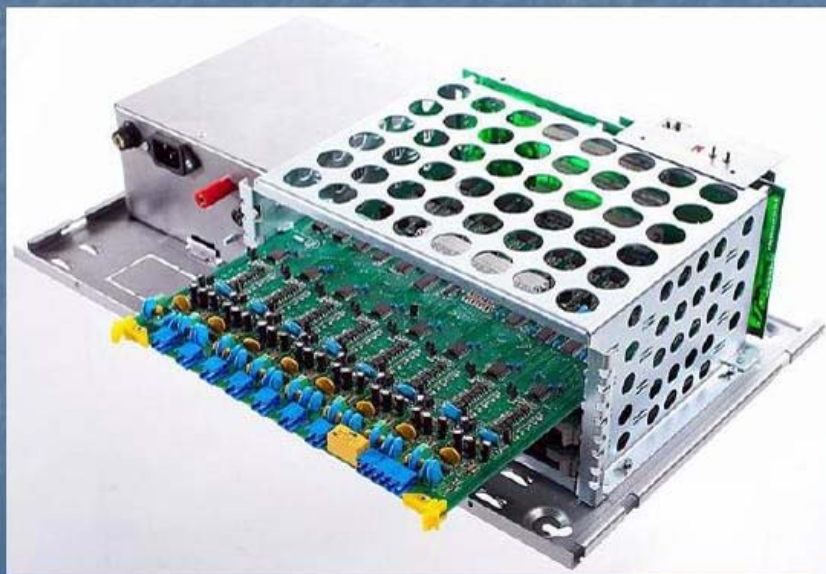
Product: GPS



Product: Industrial



Product: Telecommunication



Zowyeh Electronic Co., Ltd



Thank You Very Much